



Susan Hood Trophy Race
June 3 and 4, 2011
Lake Ontario 300 Committee
Port Credit Yacht Club

SAILING INSTRUCTIONS

1 RULES

- 1.1 The race will be governed by the rules as defined in *The Racing Rules of Sailing*.
- 1.2 The prescriptions of the Canada Yachting Association (CYA) apply for the entire race; including in US waters, see
www.sailing.ca/files/racing/rules/CYAPrescriptions2009-12.pdf
- 1.3 Applicable Class Rules
Sailboats racing in PHRF, the PHRF-LO rules shall apply
Sailboats racing in IRC, the IRC Rules 2011 Parts A, B and C shall apply
- 1.4 The Susan Hood Trophy Race is governed by the following
Susan Hood Trophy Race Equipment & Safety Regulations available at
www.susanhood.pcy.net
Port Credit Yacht Club Visiting Yacht Policy available at www.pcy.net
- 1.5 Racing rule(s) will be changed as follows:
The provisions of Appendix Q (CYA Prescription) of the Racing Rules of Sailing shall apply to the period between 2000hrs and 0600hrs
Rule 41 – Outside Help
Is modified to add
 - e) help to recover a crew member from the water and return the crew member to the boat before the boat continues racing.
 - f) to communicate with any person, competitor, sailboat or outside source of information available using any means available throughout the race.

Other changes to the Racing Rules of Sailing are documented in the appropriate items below.

1.6 Class rule(s) will be changed as follows:

IRC: Sailboats are allowed to carry one additional spinnaker over the number listed in the sailboats' IRC certificate

1.7 Sailboats shall only display a sail number registered specific to the sailboat at the time of its commission. Requests to display alternative sail numbers to the sailboat's commission may be approved by the Race Committee if filed, in writing, with the registrar prior to 1700 EDT Friday, June 3, 2011.

1.98 While racing, sailboats shall not fly an ensign, a club burgee or other flags unless required or permitted by the Racing Rules of Sailing, Notice of Race, Sailing Instructions, Class Rules, and ISAF Regulations or supplied by the Organizing Authority. See SI 16 Safety Regulations for withdrawals

1.9 In case of differences between the Notice of Race and these Sailing Instructions, the Sailing Instructions shall apply

2 NOTICES TO COMPETITORS

Notices to competitors will be posted on the official notice board located in the PCYC club house, to the left of the bottom of the main staircase

3 CHANGES TO SAILING INSTRUCTIONS

Any change to the sailing instructions will be posted on the official notice board before 1700 on the day it will take effect, except that any change to the schedule of races will be posted by 2000 on the day before it will take effect.

4 SIGNALS MADE ASHORE

Signals made ashore will be displayed on the main flag pole of the Port Credit Yacht Club.

5 SCHEDULE OF RACES

5.1 The first warning signal is at 1955 EDT, Friday, June 3, 2011.

5.2 Division and fleet splits and starting sequence, including class flags, for RRS 26, shall be posted by June 1, 2011 at www.susanhood.pcy.net and will be available at the information meeting.

6 CLASS FLAGS

See 5.2

7 RACING AREA

The race will occur in the western end of Lake Ontario.

8 THE COURSES

	Start	
To	Burlington Weather Tower	Left to port
To	Niagara Mark	Left to port

To	Finish	
----	--------	--

9 MARKS

Burlington Weather Tower, AKA Wagners Beach Light	A tower with a flashing yellow light located at approximately 43° 16.22' N 079° 45.56' W.
Distance Mark	A yellow tetrahedron, located on a bearing of 140° magnetic from the Race Committee Shore Station and approximately at 43°33.72'N 079°33.38'W. See Diagram 2, The Finish
Finish Mark	A white buoy with orange stripes and fixed low intensity amber (yellow) light, lighted only overnight, approximately 140 mag and 240 yards (0.12nm) from the shore station approximately at 43°33.69'N 079°33.32'W. See Diagram 2, The Finish.
Niagara Mark	A red buoy marked "2", with a flashing red light (4s.), located at approximately 43°19.04'N, 79°04.23'W, 3.4 NM north of the light at Fort Niagara. (<i>Niagara Bar light buoy 2</i>)
PCYC Mark	A white buoy with orange stripes, with a red flag, and flashing amber (yellow) light, lite only overnight, approximately 200° magnetic and 1200 yards (0.6nm) from the PCYC Harbor entrance light approximately at 43°33.20'N 079°33.50'W. See Diagram 2, The Finish.
Race Committee Shore Station	A mast flying an orange flag, located on the headland immediately west of the entrance to the harbour at PCYC approximately at 43°33.76'N 079°33.45'W. See Diagram 2, The Finish
Start Area	Located approximately 0.5 NM on a bearing of 140° magnetic from the entrance to the harbour at Port Credit Yacht Club

- 9.1 Marks as listed, above, should be at the identified latitude and longitude location. In the event that a mark is not at the identified latitude and longitude location, or otherwise cannot be seen due to poor visibility, then the sailboat shall round the identified latitude and longitude location as indicated in the Sailing Instructions, and continue with the race.
- 9.2 A record shall be entered in the sailboat's log detailing the timeline and efforts made to find the mark and the time that the mark's identified latitude and longitude was deemed to have been rounded.. The sailboat's GPS tracking record shall be saved and provided for evidentiary review by the Race Committee on request.

10 THE START

- 10.1 Races will be started by using rule 26, with an interval of **at least** one minute between a start and the warning signal for the next start.
- 10.2 The starting area shall be located at the Start Mark.
- 10.3 The starting line will be between an inflatable orange mark and the halyard carrying an orange flag on the Race Committee vessel,
- 10.4 After the first warning signal and prior to her warning signal, a sailboat shall keep clear of the starting area that extends one-quarter of the length of the starting line ahead of and behind the starting line. It shall also extend one-quarter of the length of the starting line past either end of the starting line; see Diagram 1, The Starting Area.
- 10.5 If and only if, code flag “L”, on the Race Committee Signal Vessel, is displayed, sailboats shall sail on starboard tack close to the stern of the Race Committee Signal Boat and shall report its sail number. Check in will not be complete until the Race Committee acknowledges the sailboat. Sailboats checking in must comply with 10.4.. Check in by VHF radio or cell phone will not be accepted.
- 10.6 A sailboat starting later than 9 minutes after her starting signal will be scored Did Not Start without a hearing. This changes rules A4 and A5. Any sailboats starting within the time limit and if the Race Committee is no longer on station, shall radio the Race Committee VHF Channel 71 Canadian when she is starting..
- 10.7 If any part of a sailboat’s hull, crew or equipment is on the course side of the starting line during the minute before her starting signal or she is subject to RRS 29.1 “Individual Recall”, the Race Committee may announce this on the VHF Channel 71 Canadian. Failure to make a broadcast or its order will not be grounds for a request for redress. This changes rule 62.1(a).

11 THE FINISH

- 11.1 The finish is between the Finish Mark and the Race Committee Shore Station.

Note: Sailboats shall not sail between the Distance Mark and the Race Committee Shore Station, and this Distance Mark shall be considered a “bounding” mark as described in Rule 31.1. See Diagram 2, The Finish.
- 11.2 Each sailboat shall call/hail the Race Committee Shore Station approximately 5 NM from the finish on VHF Channel 71 Canadian. Sailboats are required to maintain radio contact with the shore station throughout the finish to ensure correct identification of the finishing sailboat, until they are docked at PCYC, whether day or night. When finishing between sunset and sunrise, all sailboats shall announce their sail numbers, immediately prior to finishing, and record their finish time.

12 PENALTY SYSTEM

- 12.1 The Scoring Penalty, rule 44.3, will apply. The penalty will be 2 places. A sailboat taking a scoring penalty shall complete the Scoring Penalty and file it with the race committee within two hours of her finish.
- 12.2 A boat On the Course Side (OCS) at the start of the boat’s class that fails to return and start properly, shall be penalized by having sixty (60) minutes added to her elapsed time without a hearing. This changes RRS 28.1, RRS 29.1, RRS Appendix A5, and RRS 64.1 (a).

- 12.3. A boat starting with the wrong class will be protested by the Race Committee and the Protest Committee will apply an appropriate elapsed time penalty if the boat is found to have infringed this requirement. This changes RRS 64.1 (a).

13 TIME LIMITS AND TARGET TIMES

- 13.1 There is no time limit
13.2 See SI 16 for withdrawals.

14 PROTESTS AND REQUESTS FOR REDRESS

- 14.1 Protest forms are available at the Communications Centre located inside the front door of the clubhouse.
14.2 Protests shall be filed at the Communications Centre (inside the front door of the clubhouse) within two (2) hours of finishing except that if a boat's finish time is after 1800 and before 0600 of the next day, she shall file her protest there by 0900 of that next day.
14.3 Notices of protests by the race committee or protest committee will be posted to inform boats under rule 61.1(b).
14.4 Breaches of instructions 1.7, 1.8, 1.9, 10.5, 16, 17 and 21 will not be grounds for a protest by a boat. This changes rule 60.1(a). Penalties for these breaches may be less than disqualification if the protest committee so decides. The scoring abbreviation for a discretionary penalty imposed under this instruction will be DPI.
14.5 Hearings will take place at 1900 EDT, Thursday, June 9, 2011 at PCYC.

15 SCORING

For sailboats racing under PHRF-LO, PHRF-LO Time-on-time will be used to calculate the corrected time. For sailboats racing under IRC, the IRC Rule will be used.

16 SAFETY REGULATIONS

- 16.1 Sailboats are encouraged to implement their own checkin process and schedule during the race with individuals ashore via phone email or other mechanism.
16.2 A boat withdrawing from the race shall wear her Ensign and keep clear of other competitors.
16.3 The Race Committee shall be notified of a boat's withdrawal at the earliest possible opportunity on VHF Channel 71 Canadian, at the following telephone number 1-866-462-8828 or at the email address of racecommittee@lo300.org .
16.4 Sailboats may check in with the Race Committee at any time during the race to advise Race Committee of their position at 1-866-462-8828 (follow the prompts) or the email address of racecommittee@lo300.org .
16.5 Failure of a sailboat to make every reasonable effort, under the circumstances, to comply with 16.3, may result in protest by the Race Committee. The results of this hearing may be used by the Organizing Authority whether to accept future registrations by this sailboat or owner.
16.6 All sailboats racing shall be required to maintain a log of significant events; mark rounding, calls to the Coast Guard and engine on and off for charging only

- 16.7 Failure of a boat to make every reasonable effort, under the circumstances, to comply with 16.3, may result in protest by the Race Committee.

17 EQUIPMENT AND MEASUREMENT CHECKS

A boat or equipment may be inspected at any time for compliance with the class rules and sailing instructions. On the water, a boat can be instructed by a race committee equipment inspector or measurer to proceed immediately to a designated area for inspection.

18 COMMUNICATION

- 18.1 Marine VHF Channel 71 Canadian shall be used by the Race Committee for radio communication during the race.
- 18.2 Each sailboat shall monitor VHF Channel 71 from one hour before her warning signal until one hour after her starting signal, and from approximately one hour before finishing until 30 minutes after finishing.
- 18.3 Sailboats are encouraged to talk to other sailboats in the race on marine VHF channel 71 throughout the race, especially at 1000 and 2200 EDT. Sailboats shall monitor marine VHF channel 16 at all other times.

19 PRIZES

Prizes will be given as follows:

<u>Number of Boats Starting the Race in a Class:</u>	<u>Flags awarded for:</u>
One	First
Two	First
Three	First and Second
Four or more	First, Second and Third

The following trophies will be awarded:

C&C 34	Lou Winters Trophy
IRC I	Memorial Cup
IRC II	John Watson Trophy
IRC Overall: Best Corrected Time	J.J.Morch Rose Bowl
PHRF I	Commonwealth Trophy
PHRF II	White Hawk Trophy
PHRF III	Dave Heron Cup
PHRF IV	Snail's Pace Trophy
Overall: Best Corrected Time PHRF/IRC	Susan Hood Cup
PHRF (NFS): Best Corrected Time	George McCloy Wheel
DH FS: Best Corrected Time	Bob Bugbee Susan Hood

20 DISCLAIMER OF LIABILITY

Sailing is an activity that has an inherent risk of damage and injury. Competitors in this event are participating entirely at their own risk. See RRS 4, Decision to Race. The race organizers (organizing authority, race committee, protest committee, host club, sponsors, or any other organization or official) will not be responsible for damage to any boat or other property or the injury to any competitor, including death, sustained as a result of participation in this event. By participating in this event, each competitor agrees to release the race organizers from any and all liability associated with such competitor's participation in this event to the fullest extent permitted by law.

22 INSURANCE

Each participating boat shall be insured with a valid third-party liability insurance policy with a minimum cover of \$2,000,000 CAD per event for Canadian boats and an adequate level of third-party liability insurance applicable in Canadian and US waters for non-Canadian boats.

Diagram 1 The Starting Area

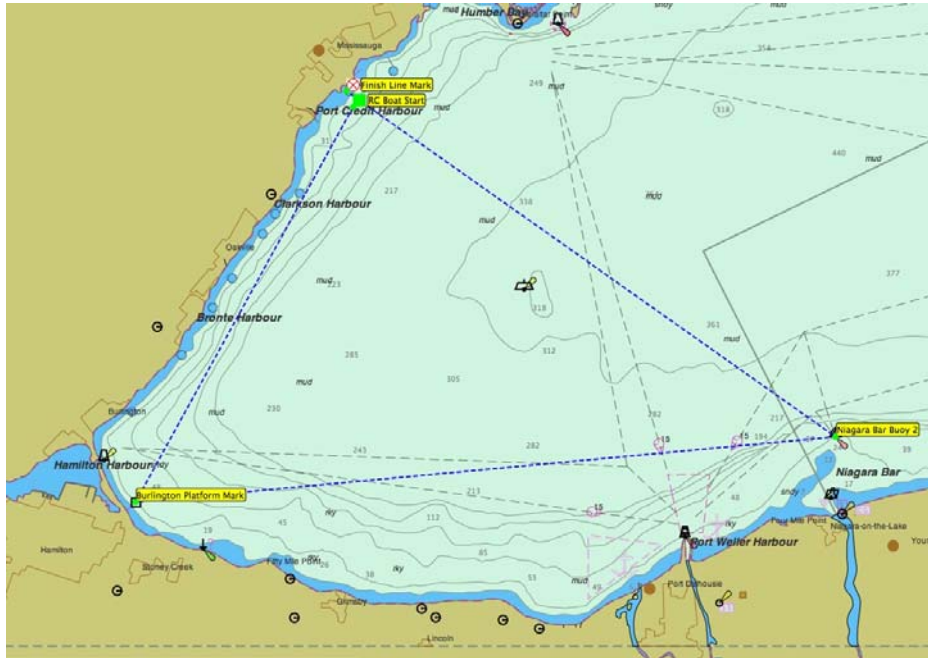


After the first warning signal for a race and prior to her warning signal, a sailboat shall keep clear of the starting area that extends one-quarter of the length of the starting line ahead of and behind the starting line. It shall also extend one-quarter of the length of the starting line past either end of the starting line

Diagram 2 The Finish



Diagram 3 Course



Not be used for navigation

Contact Information

L0300

Web site www.lo300.org
Email racecommittee@lo300.org
Phone 1-866-462-8828 (follow the prompts)

PCYC

Web site www.pcy.com
Phone 905-278-7911
FAX 905-278-2519



Special mention of the SHTR Corporate Sponsors



Special mention of SHTR Contributors

**Pitney Bowes,
Diversicare Canada
Hub International Insurance**